

# HEALTH AWARENESS PROGRAM

ABOUT

## LIFE STYLE DISEASES

BY

**ROXXSTAR  
LIFECARE PVT. LTD.**



ROXXSTAR LIFECARE PRIVATE LIMITED  
MCF-62, 100 Feet Road, Ballabgarh, Faridabad HR-121004  
[www.roxxstarlifecare.com](http://www.roxxstarlifecare.com), [roxxstarcare@gmail.com](mailto:roxxstarcare@gmail.com)  
Customer Care : 0129-4113534

## PAST

MALARIA

DIPHTHERIA

SMALLPOX

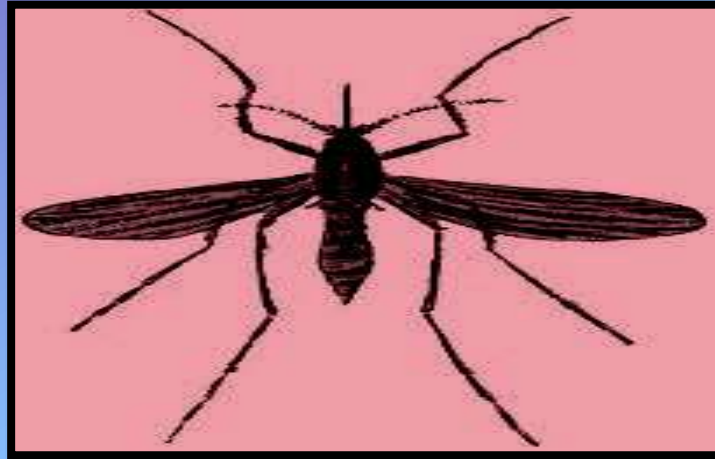
PLAGUE

CHICKEN POX

CHOLERA

TUBERCULOSIS

WHOOPING COUGH



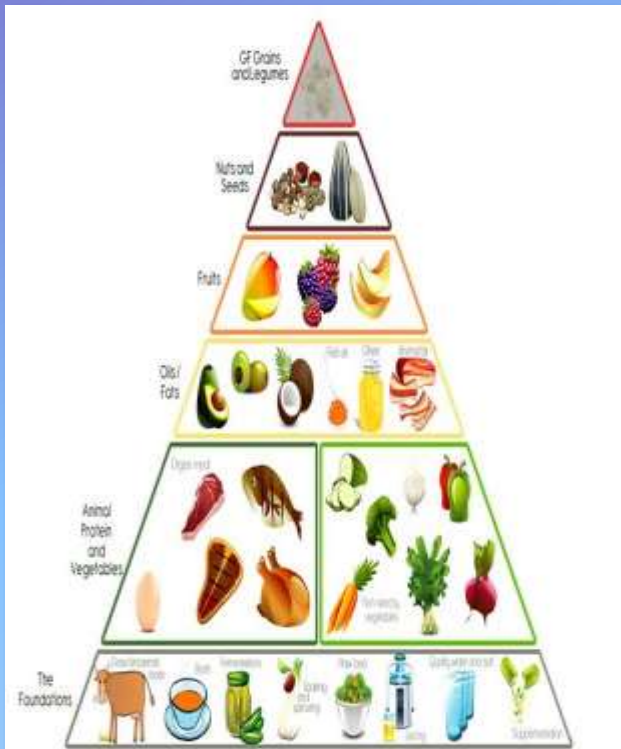
*Cause : micro organism*



# WHAT WENT WRONG?

Earlier the food what we ate was as good as **Medicine**. But,  
Today the food what we eat is as good as **Slow poison**

## *REASON FOR 90% OF LIFESTYLE DISEASE*



*What your body needs?*

- **Vitamins**
- **Trace elements**
- **Minerals**
- **Carbohydrates**
- **Fibres**
- **Unsaturated fats**
- **Proteins**
- **Amino acids**
- **Enzymes**
- **Herbs**
- **Water**



*What your body daily gets?*

*Refined products,  
Meat, Animal products,  
Boiled down  
vegetables,  
fruits, Salt,  
Sugar,  
Cholesterol,  
Caffeine,  
Alcohol,  
Medication,  
Food addictives,  
Pesticides*



## Soda Pop, Carbonated Soft Drinks, sweetened beverages...

Here is what your favourite drink contains...

- 1 Phosphoric acid:**  
Leading to osteoporosis, corrosion of bones & teeth, impairs digestion
- 2 Alarming Sugar Content :**  
Leading to Diabetes, Weight gain, increased BP, High Cholesterol, Heart Diseases, Premature Ageing etc.
- 3 Aspartame :**  
An artificial sweetner, Highly carcinogenic. Cause Brain Tumor, Birth defect, Epilepsy, Diabetes etc.
- 4 Caffeine :**  
Cause Insomnia, High BP, Irregular Heart Beat, High Cholesterol, Cancer etc
- 5 Sodium Benzoate :**  
Common preservative, cause serious cell damage
- 6 Tap water :**  
Contains chemicals like chlorine, lead, Cadmium, organic pollutants etc



You wouldn't eat 16 packs of sugar,  
why are you drinking them ?



# LIFE FEW DECADES BACK AND TODAY....

## LIVING LONG

## DYING SHORT

EARLIER



## Living short

## Dying long

TODAY





# TOXINS FROM ENVIRONMENT

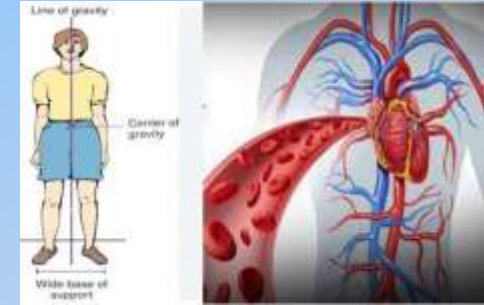


## AIR POLLUTION

*Air pollution is thought to be the cause for 1 in 10 deaths due to Lung Cancer Environmental pollution threatens human health. Air pollution in cities causes a shorter lifespan for city dwellers to disturb our Mechanical Balance*

*आज आप देख रहे हैं कि चारों तरफ बड़ी तेजी से पेड़ पोधों को काटा जा रहा है, एयर पॉल्यूशन बढ़ रहा है. इससे हमारे शरीर का मैकेनिकल बैलेंस बिगड़ गया और हम बीमारियों की तरफ बढ़ गए!*

## MECHANICAL BALANCE



## WATER POLLUTION

*Studies show that the alarming rate of increase in water pollution has affected millions of lives. More than 780 million people do not have access to clean water to disturb our Chemical Balance*

*जर्मनी पर आज चारो तरफ पानी की भारी समस्या है बहुत तेजी से वाटर पॉल्यूशन हो रहा है साथी फसले केमिकल से पकाई जा रही हैं पॉस्टिक आहार बाँडी को नहीं मिल रहा है जिससे हमारी बाँडी में केमिकल की मात्रा बढ़ी और हम बिमारियों की तरफ बढ़े!*

## CHEMICAL BALANCE



## RADIATION

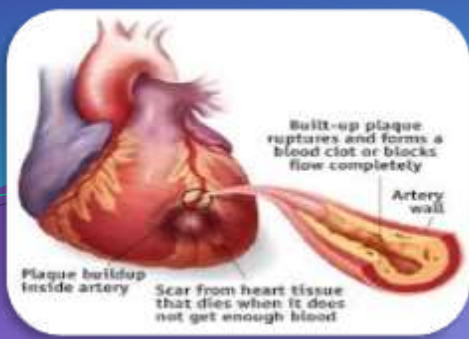
*Radiation breaks down in living cells into dangerously reactive free radicals which subject our bodies to a continual assault, attacking essential molecules of life such as DNA and proteins. and disturb our body electrical balance.*

*रेडिएशन के कारण हमारे शरीर का इलेक्ट्रिक बैलेंस बिगड़ा आज हम तेजी से टेक्नोलॉजी की तरफ बढ़ रहे हैं टेक्नोलॉजी के कारण हर क्षेत्र में क्रांति आई! लेकिन इसी के साथ 4G, 5G की टेक्नीक भी आई। अनेकों ऐसी रेडिएशन ने हमारे शरीर का इलेक्ट्रिक बैलेंस बिगाड़ दिया! जिसके कारण हार्ट अतेक, बीपी, हैडिंगे जैसी अनेको बिमारियो ने जन्म लिया ओर हम बुमारियो की तरफ बढ़े!*

## ELECTRICAL BALANCE







## HEART ATTACK

**DISEASES** 60% of Heart related deaths in the world will occur in India



## DIABETES

1 out of 7 in India is a Diabetic



## CANCER:

Cancer is the 3<sup>rd</sup> Largest Killer in India



## HYPERTENSION

35% of school children in urban areas suffer from hypertension



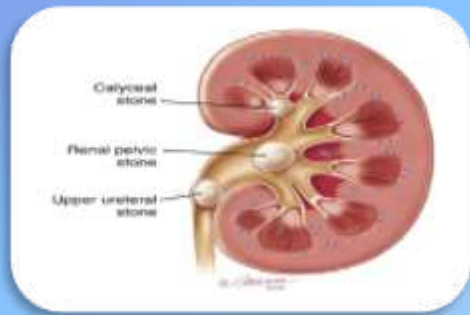
## OSTEOPOROSIS

Expected case of osteoporosis will increase by 250 million every year



## ASTHMA

Asthma is a chronic (long-term) condition that affects the airways in the lungs.



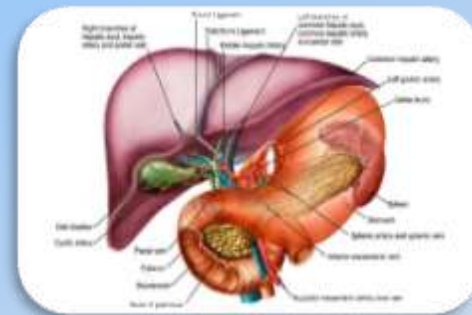
## STONE PROBLEM

One in every 20 people develop kidney stones at some point in their life.



## OBESITY

50% of Indian population will suffer from obesity in the coming ten years



## LIVER

One in every five persons in the state has some or the other liver complication.



## GAYNECOLOGICAL PROBLEMS

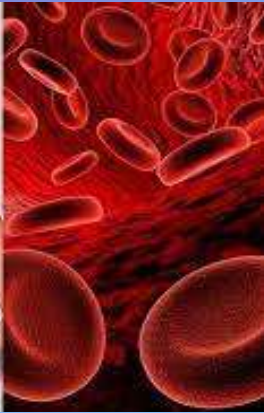
'1 in 20 women' hit by early menopause: Doctor baffled at rising numbers of under 40s affected



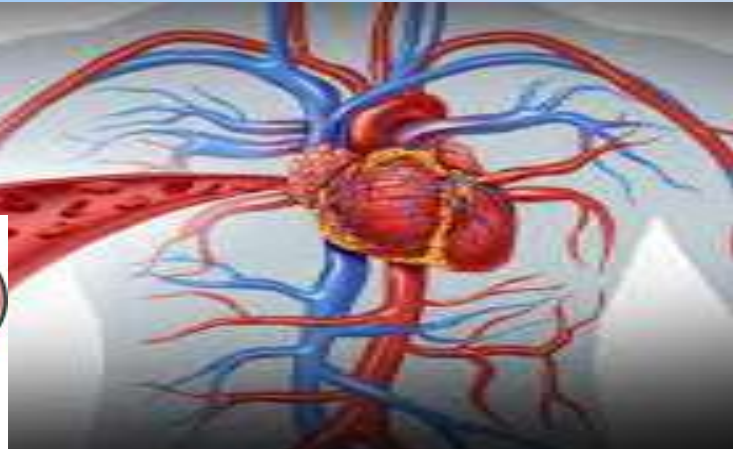
**Cause: lifestyle- the way we live**



# Iron Deficiency

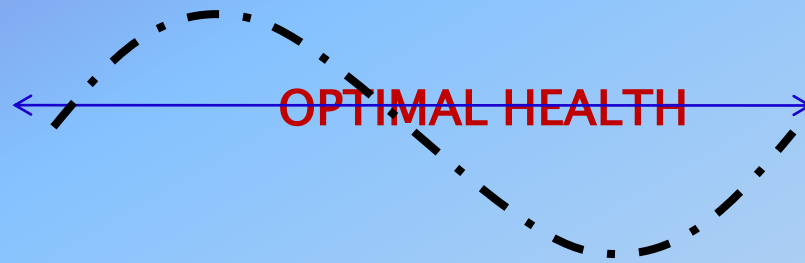


# Short of Oxygen Label





# How to bring back the **Optimal Health** ?



***Zero Earth  
Therapy***

The Only Answer  
is

**Change your life style**

**(Aware about food , Lifestyle &  
Lifestyle disorder**

**Fulfil the Zero Earth Therapy**

**If we aware/educate about life style disorder, then we will be  
healthy without any medication**



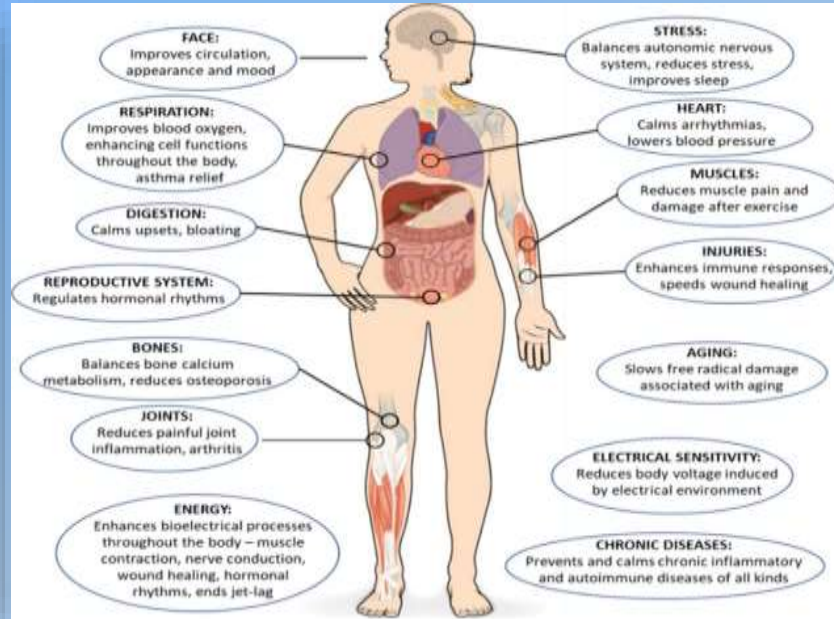


# Zero Earth Therapy

## DISCONNECT OUR BODY IN THE EARTH

The problems that arise in our body due to the disconnection between our body and the earth. To overcome these problems we will have to connect to the earth. The body's electric balance must be brought to zero for this we used zero earth therapy. its use the electric balance of our body becomes zero. we start moving a way from electric radiation and slowly our body starts getting healthy. Our body gets very good results in problems like heart attack, BP, diabetes, hypertension, high blood pressure, kidney problem, iron deficiency and oxygen nutritional deficiencies.

डॉक्टरों के अनुसार 2 से 3 घंटे नंगे पांव चलने से बॉडी में बहुत ज्यादा राहत मिलती है पैरों की मासपैसिया और लिंगामैन्ट को बहुत ज्यादा मज़बूती मिलती है सुबह की सैर से शरीर के विद्युत संतुलन को शून्य पर लाया जा सकता है इसके लिए हमने जीरो अर्थ थेरेपी का प्रयोग किया। इसके प्रयोग से हमारे शरीर का विद्युत संतुलन शून्य हो जाता है। ओर हार्ट अटैक, वीपी, डायबिटीज, हाइपरटेंशन, हाई ब्लड प्रेशर, किडनी की समस्या, आयरन की कमी ओर ऑक्सीजन की कमी जैसी समस्याओं में हमारे शरीर को बहुत अच्छे परिणाम मिलते हैं।



### EARTHING/GROUNDING

**IG: @MAGNIFIEDCONSCIOUSNESS**

When you walk barefoot in nature the earth's natural electrons are transferred directly in to your body through your feet. The earth is one giant energy generator. As it moves around the sun and rotates on its axis it builds up massive amounts of high frequency natural energy. Wearing shoes with rubber soles completely disconnects you from connecting with the earth, and also disconnects you from your true self.



All Rights Reserved © ROXXSTAR LIFECARE PRIVATE LIMITED

[www.roxxstarlifecare.com](http://www.roxxstarlifecare.com)



ROXXSTAR

# KAWACH EARTH MATTRESS

*Zero Volt Therapy Mattress with Pillow cover, Mobile Radiation Chip, EMS Foot Massager have been designed to enhance the sleeping experience and promote overall well being. They help improve the quality of sleep for anyone who uses them, however, these product are particularly beneficial for individuals who suffer from conditions such as:*

Blood pressure  
Oxygen Level  
Heart Attack

Hedge  
Depression  
Body Pain

*Kawach जीरो वोल्ट थेरेपी Mattress को नींद के अनुभव को बढ़ाने और समग्र कल्याण को बढ़ावा देने के लिए डिजाइन किया गया है। वे उनका उपयोग करने वाले किसी भी व्यक्ति के लिए नींद की गुणवत्ता में सुधार करने में मदद करते हैं, हालांकि, ये उत्पाद उन व्यक्तियों के लिए विशेष रूप से फायदेमंद हैं जो निम्न स्थितियों से पीड़ित हैं: रक्त संचार जोड़ों का दर्द मधुमेह ऑक्सीजन स्तर थायराइड शरीर में दर्द दिल का दौरा अवसाद कैंसर दर्द मोबाइल रेडिएशन चिप मोबाइल रेडिएशन को कंट्रोल करता है, पेन बेल्ट, पीठ-टॉमी दर्द को कंट्रोल करता है और एक्यूप्रेसर मैट एक्यूप्रेसर मेंटेन करता है*



All Rights Reserved © ROXXSTAR LIFECARE PRIVATE LIMITED

[www.roxxstarlifecare.com](http://www.roxxstarlifecare.com)





ROXXSTAR

## BLOOD CIRCULATION MACHINE

*a complete wayam/ yoga and morning walk a have been designed to enhance the sleeping experience and promote overall well being. They help improve the quality of sleep for anyone who uses them, however, these product are particularly beneficial for individuals who suffer from conditions such as:*

Blood circulation  
Obesity  
Oxygen Level  
Attack Alzheimer's

Thyroid  
Blood Pressure  
Depression

Body Pain  
Joint Pain  
Heart

संपूर्ण व्यायाम/ योग और सुबह की सैर, के साथ बढ़िया स्वास्थ्य देता है। इसका उपयोग करने वाले किसी भी व्यक्ति के लिए नींद की गुणवत्ता में सुधार करने में मदद करती हैं, हैडिंग, बदन दर्द, के साथ-साथ रक्तसंचार भी मेन्टेन करती है अगर कोई इंसान 15 मिनट ब्लड सर्कुलेशन मशीन का उपयोग करता है तो उसे 5 किलोमीटर दौड़ने के बराबर होती है इसके उपयोग से मधुमेह को नियंत्रित किया जा सकता है, बीपी को ठीक रखा जा सकता है, सर्वाइकल और पीठ दर्द में उपयोगी होती है पैरों की मालिश करती है यह थाइरोइड एनसोनिया में भी बहुत उपयोगी है



All Rights Reserved © ROXXSTAR LIFECARE PRIVATE LIMITED

[www.roxxstarlifecare.com](http://www.roxxstarlifecare.com)





**ORIGIN**  
Sanjiwani Water

AYURVEDA  
GRAVITY BASED  
WATER PURIFIER

**100% NATURAL WATER**

REMOVES BACTERIA & VIRUS  
MINERAL RO WITH DOUBLE PROTECTION  
CLEAR & TASTY WATER  
ENVIRONMENTAL PROTECTION

Purifies water from any source

Pure water in the form of water  
Water filtration system  
UF New Technology with MINERAL WATER

ROXXSTAR

# ORIGIN SANJIWANI

It works on the root cells of the body. Origin Sanjiwani water repairs the cell and makes it as good as new. This jar works without electricity. Eight types of content have been added in this jar. Which enhances the properties of water.

यह शरीर की जड़ कोशिकाओं पर काम करता है। ओरिजिन संजीवनी जल कोशिका की मरम्मत करता है और उसे नए जैसा बनाता है। यह जार बिना बिजली के काम करता है। इस जार में आठ तरह का कंटेंट डाला गया है। जो पानी के गुणों को बढ़ाता है।

- **Stone :-** Reduces the hardness in the water
- **Charcoal :-** It greatly improves water quality and plays an important role in purifying contaminated water.
- **Iron :-** Iron increases the iron level in the body
- **Copper:-** It provides strength to the body
- **Java Plum :-** It keeps water safe for a long time and prevents the formation of algae etc.
- **Shisham :-** Beneficial in obesity, vitiligo, fever, wounds, ulcers, benign prostatic hyperplasia, gonorrhoea etc.
- **Neem :-** relieves mental stress
- **Bamboo:-** It contains proteins, amino acids, carbohydrates and many essential minerals and vitamins





ROXXSTAR

# Electric Tandoor

Cooking on gas pollutes the air at home 5 times more. A recent study conducted by Australian scientists found that 1 in 8 American children have asthma caused by cooking gas. Let's talk about India It is the second largest LPG consumer country in the world. Cooking on gas pollutes the air at home 5 times more. It has been advised in the study to use induction or electric stoves instead of LPG. electric tandoor is safe for our family. Actually you are burning methane, due to which nitrogen-oxygen combines to form nitro oxides which are poisonous particles. This can cause many health problems including asthma. Let us tell you, methane is the most dangerous greenhouse gas. Which traps 25 times more heat than carbon dioxide.

गैस पर खाना बनाने से घर की हवा 5 गुनी ज्यादा प्रदूषित होती है ज्यादातर लोग खाना पकाने के लिए एलपीजी गैस का इस्तेमाल करते हैं. एलपीजी गैस पर भी खाना बनाना अपनी सेहत के साथ खिलवाड़ करने से कम नहीं है. जब आप गैस जलाते हैं तो असल में आप मीथेन को जला रहे होते हैं, जिससे नाइट्रोजन-ऑक्सीजन मिलकर नाइट्रोऑक्साइड बनते हैं जो जहरीले कण हैं. इससे दमा व क्कज समेत कई स्वास्थ्य समस्याएं हो सकती हैं. आपको बता दें, मीथेन, सबसे खतरनाक ग्रीनहाउस गैस है. जो कार्बन डाई ऑक्साइड से 25 गुना ज्यादा गर्मी अपने अंदर कैद करती है. ऑस्ट्रेलियाई वैज्ञानिकों द्वारा हाल ही में किए गए एक अध्ययन में पाया गया कि हर 8 में से 1 अमेरिकी व्यक्ति को दमा की वजह रसोई गैस है. बात करें भारत की तो यह विश्व का दूसरा सबसे बड़ा एलपीजी उपभोक्ता देश है. वैज्ञानिकों ने अध्ययन में यह सलाह दी है कि एलपीजी की जगह इंडक्शन, बिजली के चूल्हों या इलेक्ट्रिक तंदूरों का इस्तेमाल करें.





ROXXSTAR

# HOME HEALTH FITNESS

Mobile Radiation Chip, EMS Foot Massager, Back Pain Relief Belt and Twister. It Exercise Ems Foot Massager Benefits Foot pain relief:

**EMS foot massagers** target particular foot muscles and offer relief from common pains such foot tiredness, strains, soreness, and stress.

**Improved circulation:** By increasing blood flow within the foot, these devices can aid in reducing swelling and enhancing tissue oxygenation.

**Relief from tension and stress** in the feet and lower legs. Improvement in general sense of wellbeing.

**Magnetic back belt** is a recent trend in the market that has garnered widespread popularity in a very short duration. It's said to be extremely helpful in providing relief from back pain

**Anti radiation chips** are designed specifically to manage the non-thermal aspect of radiation emitted from electronic gadgets. They do so by neutralizing the harmful nature of electromagnetic radiations emitted from them, so that there is no biological damage to the human body





# How to Become Our Direct Seller ?

## PREMIUM CATEGORY

Kawach Earth Mattress+ Pillow Cover  
+ Mobile Radiation Chip + Pain Relief Belt +  
Acupressure Mate

**7450**

## PREMIUM CATEGORY

Blood Circulation Machine + Mobile  
Radiation Chip

**9550**

## WELCOME CATEGORY

Origin Sanjiwani Water  
+ Mobile Radiation Chip

**4450**

## STATER CATEGORY

Back Pain Belt + Mobile Radiation Chip  
+ Twister + EMS Foot Massager

**2750**





**CHOOSE  
US FOR  
RENOVATE  
YOUR  
LIFESTYLE**





# EVERY PERSON HAS DREAMS



# RECOMMENDATION



ON AVRAGE  
ONE MAN HIS LIFE 5 CRORE  
RECOMMENDATION  
ANY BRANDS



Like a  
Bike & Car  
TV & Refrigerator  
Shoes & Garments  
Hotel & Restaurant

**Free**



# have a **LOOK** !!! 3 simple steps to *Earn Money*

**1**

**USE**  
the  
**PRODUCT**

**2**

**GET**  
the  
**RESULT**

**3**

**SHARE**  
with  
**PEOPLE**

When we will purchase Product from ROXXSTAR LIFECARE PVT. LTD.  
Through distributor code. We will get up to 15% to 30% discount on each and every  
product of ROXXSTAR LIFECARE PVT. LTD. with Sales points  
on every purchase.

On that sales point we will get a WONDERFUL opportunity to  
earn EXTRA ORDINARY INCOME

Everybody have contact LIST of his own relatives, friends & neighbors  
They are also suffering from various kind of health problems

If we will **“USE”** the product, get **“RESULT”** from this product & **“SHARE”** with the peoples

WE CAN EARN EXTRA ORDINARY INCOME  
RESULT SHARING



# BENEFITS OF SHARING WITH PEOPLES

## TYPE OF INCOME

1. *WELCOME BONUS*
2. *SINGLE LEG INCENTIVE*
3. *TEAM SALES INCENTIVE*
4. *LEVEL RANK & MONTHLY BONUS*
5. *DIRECT REFERRAL INCENTIVE*
6. *FAST PERFORME BONUS*
7. *REWARDS & AWARDS*
8. *REPURCHASE INCOME*



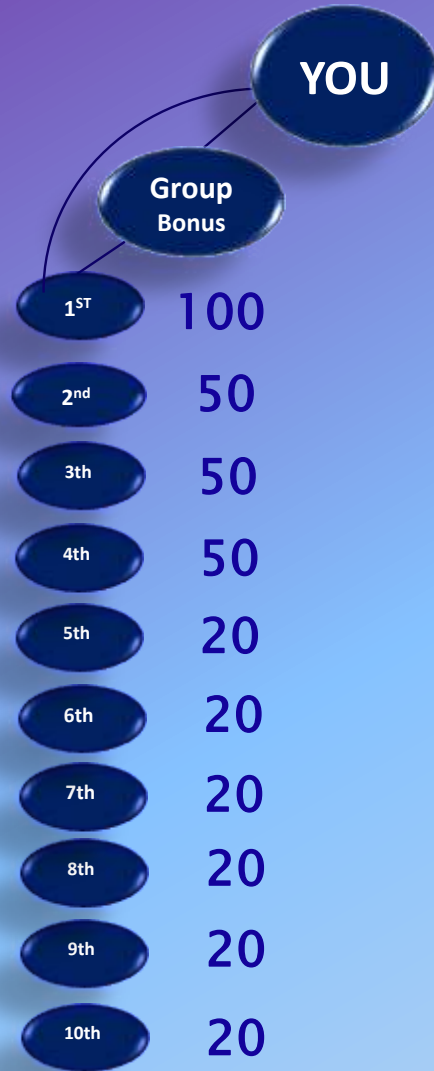


# Benefits of sharing with peoples

## 1. WELCOME BONUS

## 2. SINGLE LEG INCENTIVE

300+ 300+



WELCOME BONUS = 200

**Bonus Group + Incentive Group**

Direct	$2 * 300 = 600$
1 <sup>st</sup> Level	$4 * 100 = 400$
2 <sup>nd</sup> Level	$8 * 100 = 800$
3 <sup>rd</sup> Level	$16 * 50 = 800$
4 <sup>th</sup> Level	$32 * 50 = 1600$
5 <sup>th</sup> Level	$64 * 50 = 3200$
6 <sup>th</sup> Level	$128 * 20 = 2560$
7 <sup>th</sup> Level	$256 * 20 = 5120$
8 <sup>th</sup> Level	$512 * 20 = 10240$
9 <sup>th</sup> Level	$1024 * 20 = 20480$
10 <sup>th</sup> Level	$2048 * 20 = 40960$



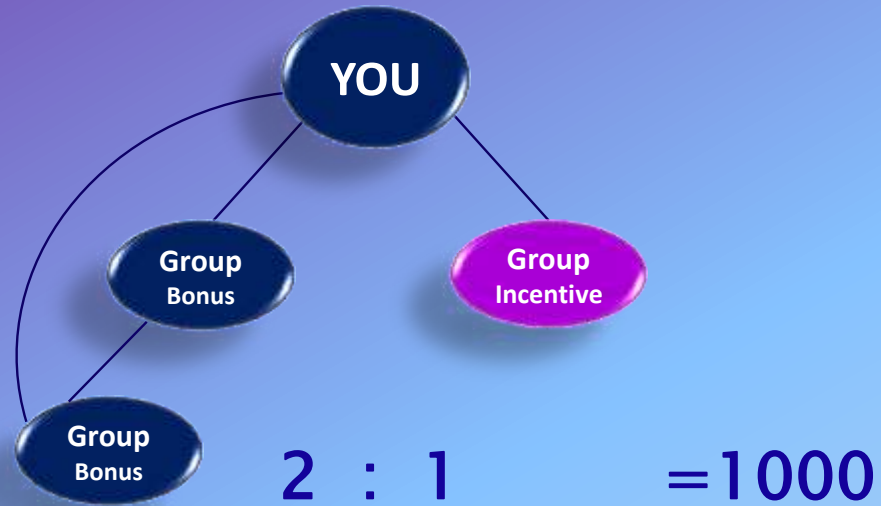
Group Bonus	Level	Incentive
11 <sup>th</sup>	10	11 <sup>th</sup> Level $4096 * 10 = 40960$
12 <sup>th</sup>	10	12 <sup>th</sup> Level $8192 * 10 = 81920$
13 <sup>th</sup>	10	13 <sup>th</sup> Level $16384 * 10 = 163840$
14 <sup>th</sup>	10	14 <sup>th</sup> Level $32768 * 10 = 327680$
15 <sup>th</sup>	10	15 <sup>th</sup> Level $65536 * 10 = 655360$
16 <sup>th</sup>	10	16 <sup>th</sup> Level $131072 * 10 = 1310720$
17 <sup>th</sup>	10	17 <sup>th</sup> Level $262144 * 10 = 2621440$
18 <sup>th</sup>	10	18 <sup>th</sup> Level $524288 * 10 = 5242880$
19 <sup>th</sup>	10	19 <sup>th</sup> Level $1048576 * 10 = 10485760$

Whole business count in premium category

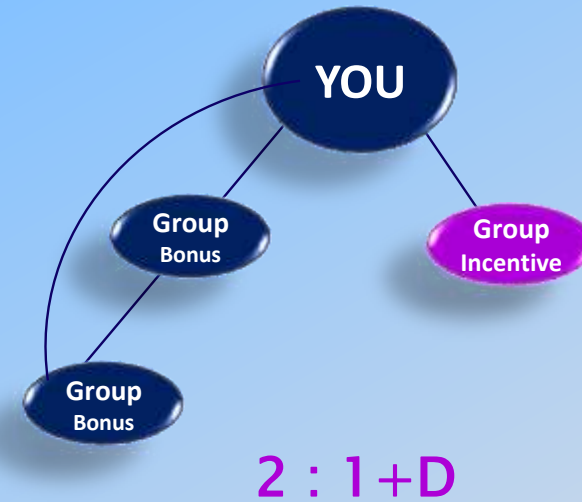
Note - ID Activation 500 compulsory hole of year

# Benefits of sharing with peoples

## 3. TEAM SALES INCENTIVE



## 4. LEVEL INCENTIVE



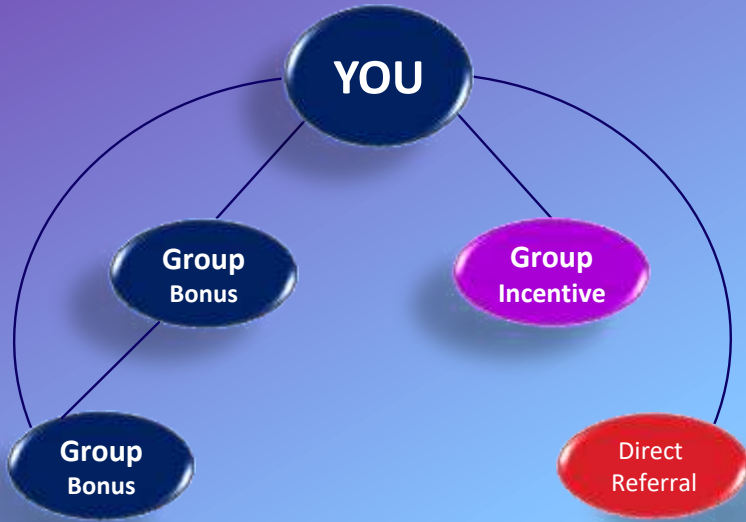
Level Income  
600/  
Count In Full Sales

N.B. – Minimum 2 direct sponsor applicable



# Benefits of sharing with peoples

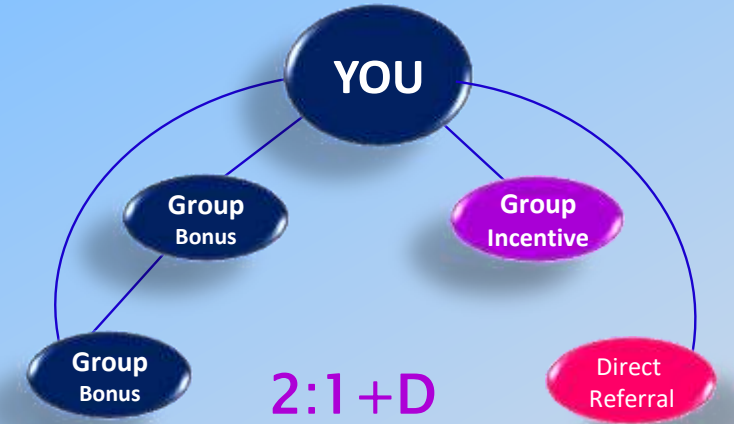
## 5. DIRECT REFERRAL



**Direct Referral**  
**1500**

Note: This Sales No Count in Single Leg Income, Matching Income and Level Income

## 6. FAST PERFORM BONUS



**2:1 + D**  
**In a 48 Hours**  
**800/**

**Total**  
**Income**  
**5000/**

1.	Welcome Bonus	= Rs. 200
2.	Single Leg Income	= Rs. 900
3.	Team Sales Incentive	= Rs. 1000
4.	Level Rank Bonus	= Rs. 600
5.	Direct Referral	= Rs. 1500
6.	Fast Perform Bonus	= Rs. 800
		-----
	Total	= Rs. 5000

N.B. – Minimum 2 direct sponsor applicable

Target	Team Size	Single Leg Incentive	Sales Incentive	Level Incentive	Total Income	Rewards & Awards	Rank's
1 <sup>st</sup>	2:1 +D	900	1000	600	5000	1000 Fast Perf + 1500 Direct Referral	Bronze
2 <sup>nd</sup>	8:5 +D	1000	4000	2000	8500	1500 Direct Referral	Silver
3 <sup>rd</sup>	16:9 +D	2600	7200	3000	14300	1500 Direct Referral	Gold
4 <sup>th</sup>	32:20	2600	16000	6000	24600	 <p>15 Lac Accidental Bema For the whole year</p>	Star



5 <sup>th</sup>	64:40	5200	32000	11000	48200	Mussoorie Couple (2N/3D)		Double Star
6 <sup>th</sup>	128:80	10400	64000	16000	90400		Bike Fund 40K DP	Bronze Star
7 <sup>th</sup>	260:160	8400	140000	34200	176400	Thailand (3N/4D)		Silver Star
8 <sup>th</sup>	580 : 320	18000	2560000	60000	334000		Goa Couple (3N/4D)	Diamond

9 <sup>th</sup>	1060 : 680	34800	544000	120000	698800	 <p>Car Fund 4L</p>	Ambassador
10 <sup>th</sup>	2120 : 1360	69600	1088000	150000	1307600	<p>Dubai Couple (3N/4D)</p> 	Blue Ambassador
11 <sup>th</sup>	4240 : 2820	141200	2256000	210000	2607200	 <p>Car Fund 6L</p>	Black Ambassador
12 <sup>th</sup>	8680 : 5640	143200	4512000	<p>15000 Monthly Bonus In 20 Month</p>	4655200	<p>Gold Ring Macau Couple (4N/5D)</p> 	Crown Ambassador



13 <sup>th</sup>	16360 : 12280	286400	9824000	18000 Monthly Bonus IN 20 Month	10110400	 <p>Singapore Couple 3N/4D</p>	Royal Ambassador
14 <sup>th</sup>	32720 : 24560	572800	19648000	20000 Monthly Bonus IN 24 Month	20220800	 <p>Car Fund 8L</p>	ROXXSTAR
15 <sup>th</sup>	64440:50120	1145600	40096000	22000 Monthly Bonus IN 24 Month	41241600	 <p>Australia Couples (3N/4D)</p>	Blue ROXXSTAR
16 <sup>th</sup>	122880:101240	2241200	8992000	24000 Monthly Bonus IN 30 Month	83233200	 <p>Car Fund 20L</p>	Black ROXXSTAR

17 <sup>th</sup>	255760:202480	4582400	161984000	26000 Monthly Bonus IN 30 Month	166566400	House Fund 25L 	Crown ROXXSTAR
18 <sup>th</sup>	521520:414760	9362800	331808000	28000 Monthly Bonus IN 36 Month	341170800	 Dubai Couples (7N/8D)	Royal ROXXSTAR
19 <sup>th</sup>	1093040:822920	19159600	658336000	30000 Monthly Bonus IN 36 Month	6774956000	Car Fund 70L 	ROXXSTAR CELEBRATY

**Total Income : 1350000000**



# Our Maximum Team Sales Incentive

## **PREMIUM CATEGORY**

Blood Circulation Machine + Mobile Radiation Chip

9550

Weekly Maximum Team Sales Incentive = Rs. 200,000

## **PREMIUM CATEGORY**

Kawach Earth Mattress + Pillow Cover + Mobile Radiation Chip + Back Pain Belt + Acupressure Mate

7450

Weekly Maximum Team Sales Incentive = Rs. 200,000

## **WELCOME CATEGORY**

Sanjiwani Water Jar + Mobile Radiation Chip

4450

Weekly Maximum Team Sales Incentive = Rs. 100,000

## **STATER CATEGORY**

Back Pain Belt + Twister + Mobile Radiation Chip + EMS Foot Massager

2750

Weekly Maximum Team Sales Incentive = Rs. 50,000

Minimum payment will be paid 200 and above

You should activate your direct seller id every month according to your rank.

Deduction - TDS according to government norms 5% admin charges

**Weekly Closing**

**EVERY THURSDAY**

Payment in 7 days after weekly closing



# have a **LOOK** !!! Legality



**GST Registration**



**PAN**



**TIN**



**MSME**



**Ministry of Corpo.**



**eAOA**



**eMOA**



**DIN**



**CIN**





**TODAY'S decision can change your life  
With ROXXSTAR LIFECARE PVT. LTD.**



**ALL THE BEST**



All Rights Reserved © ROXXSTAR LIFECARE PRIVATE LIMITED

[www.roxxstarlifecare.com](http://www.roxxstarlifecare.com)

# ROXXSTAR LIFECARE PRIVATE LIMITED

## Repurchase Products



ROXXSTAR

### BLOOD CIRCULATION MACHINE

*a complete wayam/ yoga and morning walk a have been designed to enhance the sleeping experience and promote overall well being. They help improve the quality of sleep for anyone who uses them, however, these product are particularly beneficial for individuals who suffer from conditions such as:*

संपूर्ण व्यायाम/ योग और सुबह की सैर, के साथ बढ़िया स्वास्थ्य देता है। इसका उपयोग करने वाले किसी भी व्यक्ति के लिए नींद की गुणवत्ता में सुधार करने में मदद करती हैं; हैडिंग, बदन दर्द, के साथ-साथ रक्तसंचार भी मेन्टेन करती है अगर कोई इंसान 15 मिनट ब्लड सर्कुलेशन मशीन का उपयोग करता है तो उसे 5 किलोमीटर दौड़ने के बराबर होती है इसके उपयोग से मधुमेह को नियंत्रित किया जा सकता है, बीपी को ठीक रखा जा सकता है, सर्वाइकल और पीठ दर्द में उपयोगी होती है पैरों की मालिश करती है यह थाइरोइड एनसाोनिया में भी बहुत उपयोगी है

DP - 9550/- MRP - 12750/-



### EMS FOOT MASSAGER

EMS (Electrical Muscle Stimulation) is a natural pain therapy method. EMS gently stimulates healthy muscles, causing them to contract and relax in order to temporarily increase local circulation and soothe soreness. Stimulating healthy muscles also helps improve and facilitate muscle performance.

DP - 599/- MRP - 810/-



ROXXSTAR

### ORIGIN KNEE RELIEVER

Knee Reliever, EMS Foot Reliever It works on the Knee Part of body. Origin Knee Reliever makes a help it as Knee Pain and Hot Massage is vary sort time. The Rechargeable Knee Massager is used to relieve joint pain, swelling, and muscle stiffness in the knee joint.

Origin Knee Reliever, ईएमएस फुट रिलीवर यह शरीर के घुटने के हिस्से पर काम करता है। घुटने के दर्द और गर्म मालिश डोना एक साथ करता है। इसका उपयोग घुटनों में जोड़ों का दर्द, सूजन और मांसपेशियों की कठोरता से राहत के लिए किया जाता है।

EMS (इलेक्ट्रिकल मसल स्टिमुलेशन) एक प्राकृतिक दर्द चिकित्सा प्रवृत्ति है। जो धीरे-धीरे मांसपेशियों को स्वस्थ करता है, जिससे वे स्थानीय परिसंचरण को स्थायी रूप से बढ़ाने और दर्द को शांत करने के लिए कार्य करता है। मांसपेशियों को स्वस्थ करने और उन्हें बेहतर बनाने में भी मदद करता है।

DP - 3360/- MRP - 4200/-





**Back Pain Belt**



**Acupressure Mat**



**BP Acupressure Shoes Mat**



**Tap**



**Membrane**



**Filter**



**Elec element**



**Tandoor Power ON/Off**

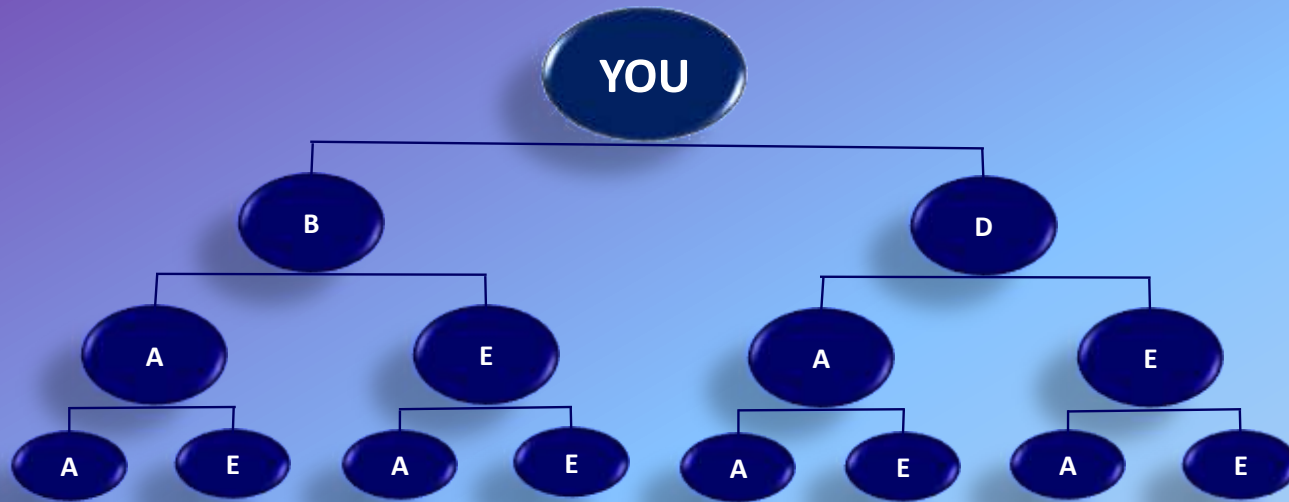
**COMING SOON**

**Kadha, Tea & Coffee, Home Care  
Personal Care, Oral Care,  
FMGC etc.**

# 8. REPURCHASE INCOME

Retail Profit 15% to 30%

Self Repurchase 1000 and get 12% Repurchase Income=120



Note: Minimum  
Repurchase  
@200/-

1	3*1000	= 3000	* 5 %	150
2	9*1000	= 9000	* 4 %	360
3	27*1000	= 27000	* 3 %	810
4	81*1000	= 81000	* 2 %	1620
5	243*1000	= 243000	* 1 %	2430
6	729*1000	= 729000	* 0.9 %	6561
7	2187*1000	= 2187000	* 0.8 %	17496
8	6561*1000	= 6561000	* 0.7 %	45927
9	19683*1000	= 19683000	* 0.6 %	118098
10	59049*1000	= 59049000	* 0.5 %	295245
11	177147*1000	= 177147000	* 0.5 %	885735
12	531441*1000	= 531441000	* 0.5 %	2657205
13	1594323*1000	= 1594323000	* 0.5 %	7971615
14	4782969*1000	= 4782969000	* 0.5 %	23914845
15	14348907*1000	= 14348907000	* 0.5 %	71744535
16	43046721*1000	= 43046721000	* 0.5 %	215233605
17	129140163*1000	= 129140163000	* 0.5 %	645700815
18	387420489*1000	= 387420489000	* 0.5 %	1937102445
19	1162261467*1000	= 1162261467000	* 0.5 %	5811307335

Monthly Income